

PROVINCIA DI VERONA

I.S.I. "ANTH" Sede I.T.C. "E. BOLZANI"
Succ. di Villafraa di Verona
VERIFICA DI VULNERABILITÀ SISMICA

tecnico

Edoardo Ottoboni Ingegnere

via V. Emanuele II, 22019 Villafraa (VI) - Tel. 0445/841141 - Fax. 0445/841144 - e-mail: ing.edoardo@ottoboni.it

collaboratore

Niccolò Ottoboni Ingegnere

via V. Emanuele II, 22019 Villafraa (VI) - Tel. 0445/841128 - e-mail: niccolò@ottoboni.it

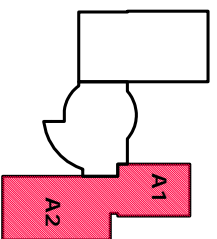
2017/2017
REVISIONE
A B C D E F G H I L

Allegato
S04

BLOCCO AULE-LABORATORI (A1+A2)
ELEVAZIONI PIANO SECONDO
SOLAI O COPERTURA

Scala
1:100
1:20

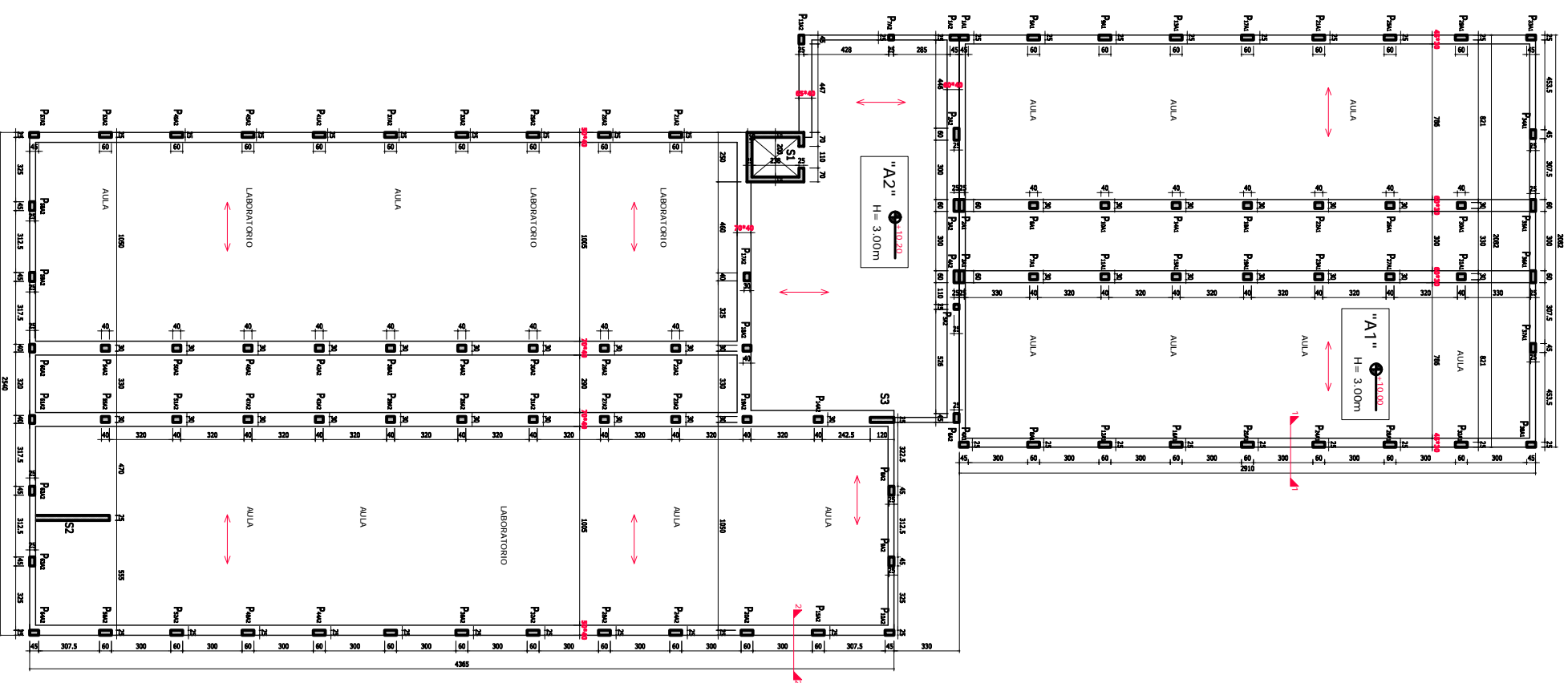
PIANTA CHIAVE



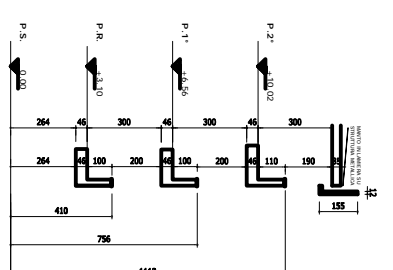
NOTA BENE

LE DESTINAZIONI D'USO RIPORTATE SONO RELATIVE AL PIANO DI ELEVAZIONE

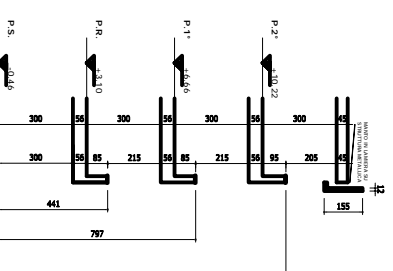
MURO C.A.



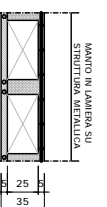
SEZIONE 1-1'



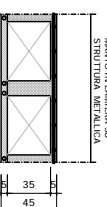
SEZIONE 2-2'



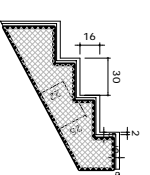
SEZIONE SOLAIO A1



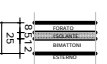
SEZIONE SOLAIO A2



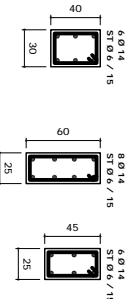
SEZIONE SCALA



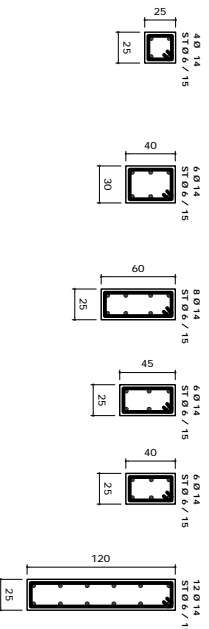
SEZIONE TAMPONAMENTO



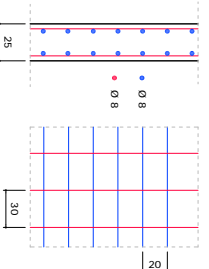
SEZIONE PILASTRI BLOCCO "A1"



SEZIONE PILASTRI BLOCCO "A2"



ARMATURA MURI VANO ASCENSORE



ARMATURA PARETE SCALA

