

tecnico
 Edoardo Otoboni Ingegnere
 C.A.P. - Professione 71, 23067 Villafranca (VI) - tel. 0445/294141 - fax 0445/294144 - e-mail: edoardo@edotoboni.it
 TIR. 0445/294142
 W: www.edotoboni.it

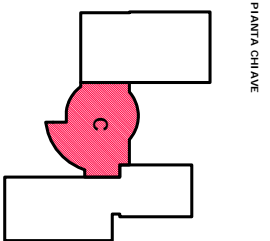
collaboratore
 Niccolò Otoboni Ingegnere
 C.A.P. - Professione 71, 23067 Villafranca (VI) - tel. 0445/294142 - e-mail: niccolò@edotoboni.it
 TIR. 0445/294142
 W: www.edotoboni.it

| REVISIONE | ESECUZIONE |
|------------|------------|
| 20/12/2017 | |
| A | B |
| C | D |
| E | F |
| G | H |
| I | L |

Allegato
S07

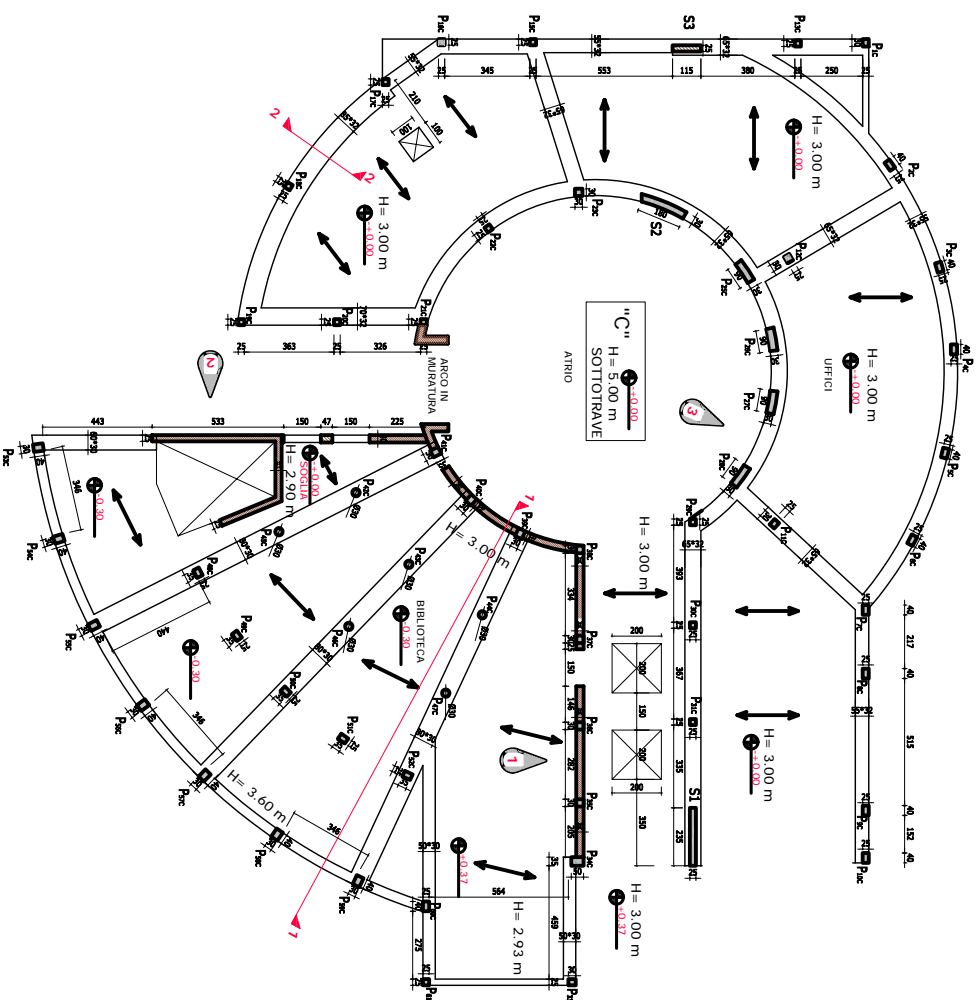
Titolo del disegno
**BLOCCO UFFICI, BIBLIOTECA,
 AULA MAGNA (C)
 ELEVAZIONE PIANO TERRA E PRIMO
 SOLO PIANO PRIMO E COPERTURA**

Scala
 1:100
 1:20

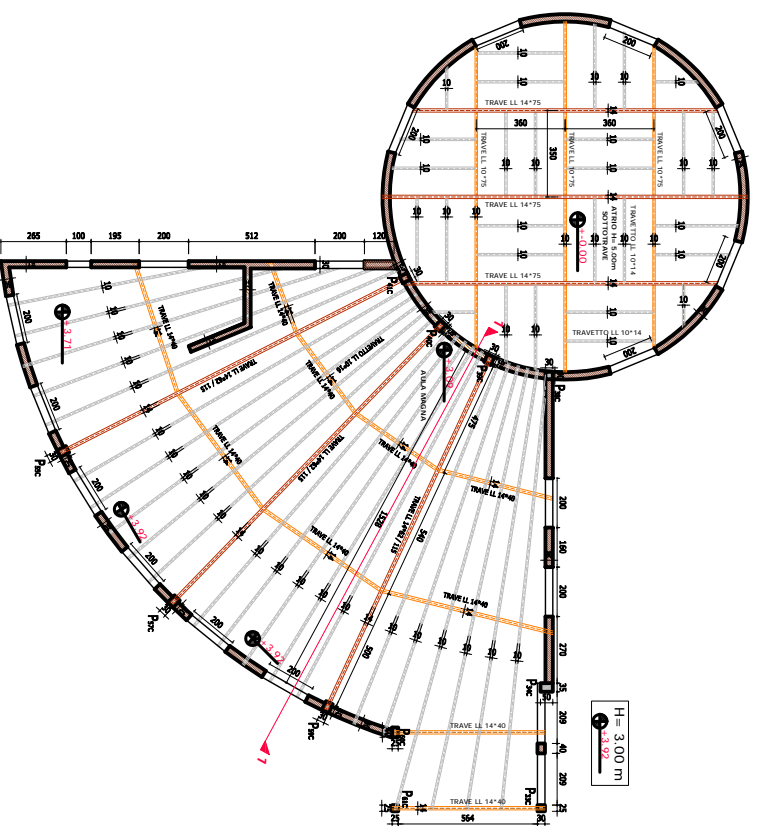


- NOTA BENE
 LE DESTINAZIONI D'USO RIPORTATE SONO RELATIVE AL PIANO DI ELEVAZIONE
- MURLO C.A.
 - MURLO IN LATERIZIO (BLOCCHI IN LATERIZIO SEMPRENI ϕ-45%)
 - PANNELLO PREFABBRICATO

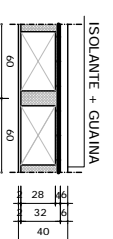
PIANO TERRA



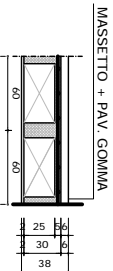
PIANO PRIMO



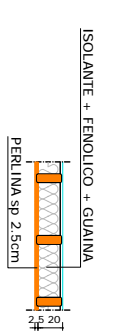
SEZIONE SOLAIO COPERTURA UFFICI



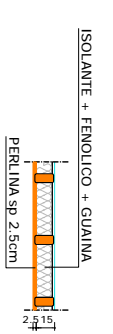
SEZIONE SOLAIO CALPESTIO AULA MAGNA



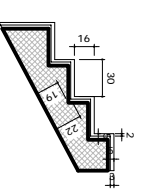
STRATIGRAFIA COPERTURA ATRIO



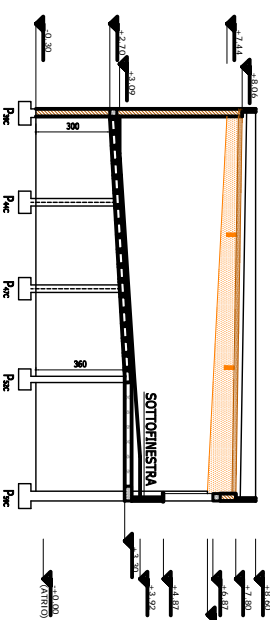
STRATIGRAFIA COPERTURA AULA MAGNA



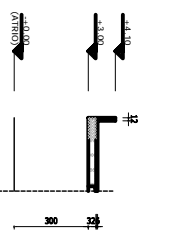
SEZIONE SCALA



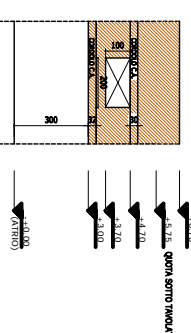
SEZIONE 1 - 1



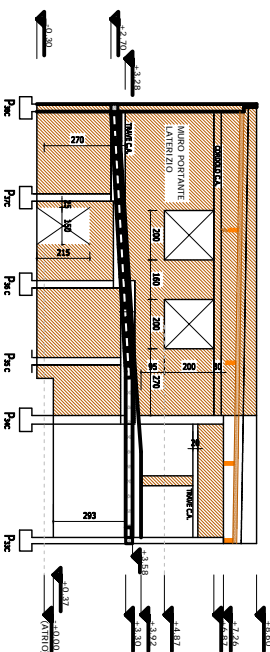
SEZIONE 2 - 2



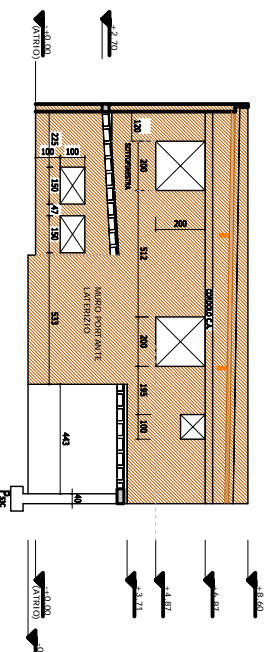
VISTA 3



VISTA 1



VISTA 2



SEZIONE PIASTRINI BLOCCO "C"

